

DESCRIPTION

This one and a half day CME course focuses on bedside skills for the practicing clinician and educator. Focused on evidence-based strategies in history, physical, point of care ultrasound, and bedside education, practitioners who are seeking to hone their clinical or educational skills will participate in hands on sessions with actual patients under the guidance of expert bedside clinician.

WHO SHOULD ATTEND

The target audience includes: Critical Care Medicine, General Practice, Hospitalist, Nursing, Physician Assistant, Pulmonary Disease, Pulmonology

OBJECTIVES

After attending this activity, the learner will demonstrate the ability to:

1. Implement a structured framework for the cardiovascular, pulmonary, and neurologic examination.
2. Formulate bedside teaching moments and implement them on the wards.
3. Identify the basic principles, utility, and limitations of point-of-care ultrasound as a diagnostic tool.
4. Utilize physiology-based reasoning to enhance bedside clinical decision-making and improve patient outcomes through effective bedside rounding techniques.

ACCREDITATION STATEMENT

The Johns Hopkins University School of Medicine is accredited by the Accreditation Council for Continuing Medical Education (ACCME) to provide continuing medical education for physicians.

**CREDIT DESIGNATION STATEMENT**

The Johns Hopkins University School of Medicine designates this live activity for a maximum of 10.75 *AMA PRA Category 1 Credits™*. Physicians should claim only the credit commensurate with the extent of their participation in the activity.

OTHER CREDITS

American Academy of Nurse Practitioners National Certification Program accepts *AMA PRA Category 1 Credit™* from organizations accredited by the ACCME.

American Nurses Credentialing Center (ANCC) accepts *AMA PRA Category 1 Credit™* from organizations accredited by the ACCME.

PAs may claim a maximum of 10.75 Category 1 credits for completing this activity. **NCCPA** accepts *AMA PRA Category 1 Credit™* from organizations accredited by ACCME or a recognized state medical society.

The Johns Hopkins University has approved this activity for 10.75 **contact hours for non-physicians**.

POLICY ON PRESENTER AND PROVIDER DISCLOSURE

It is the policy of the Johns Hopkins School of Medicine that the presenter and provider globally disclose conflicts of interest. The Johns Hopkins School of Medicine OCME has established policies in place to mitigate relevant conflicts of interest prior to this educational activity. Detailed disclosure will be made prior to presentation of the education.

NOTICE ABOUT OFF-LABEL USE PRESENTATIONS

The Johns Hopkins School of Medicine/*Foundations of Bedside Medicine: Essential Skills for the Modern Clinician* may include presentations on drugs or devices, or use of drugs or devices, that have not been approved by the Food and Drug Administration (FDA) or have been approved by the FDA for specific uses only. The FDA has stated that it is the responsibility of the physician to determine the FDA clearance status of each drug or device he or she wishes to use in clinical practice.

The Johns Hopkins School of Medicine is committed to the free exchange of medical education. Inclusion of any presentation in this program, including presentations on off-label uses, does not imply an endorsement by Johns Hopkins of the uses, products, or techniques presented.

AMERICANS WITH DISABILITIES ACT

The Johns Hopkins School of Medicine fully complies with the legal requirements of the ADA and the rules and regulations thereof.

COPYRIGHT INFORMATION

All rights reserved. No part of this syllabus may be used or reproduced in any manner whatsoever without written permission except in the case of brief quotations embodied in articles or reviews.

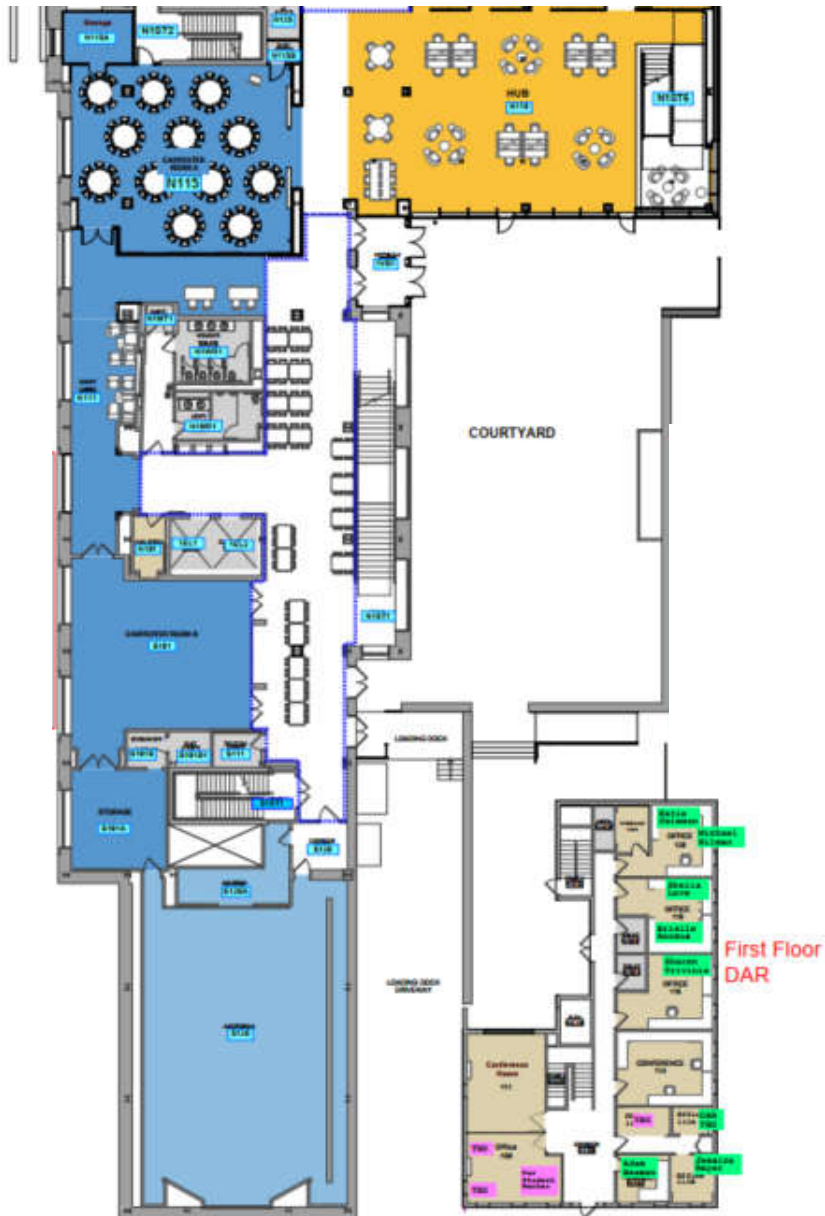
WHAT YOU SHOULD KNOW ABOUT GIFTS TO PHYSICIANS FROM INDUSTRY

Gift giving from the pharmaceutical, device and medical equipment industries to physicians has long been a customary practice. But when gift giving is not practiced within established ethical boundaries, the perception of conflict of interest is raised. All physicians and physicians in training should adhere to the AMA Code of Medical Ethics, Opinion 8.061, "Gifts to Physicians from Industry" which can be found under the AMA Code of Medical Ethics at <https://code-medical-ethics.ama-assn.org/ethics-opinions/gifts-physicians-industry>.

Johns Hopkins faculty, staff, employees, students, and trainees must adhere to the more restrictive Johns Hopkins Medicine Policy on Interaction with Industry that can be found at this link
<https://industryinteraction.jhu.edu/jhm-policy-on-interaction-with-industry>.

EVACUATION PLAN FOR APPROPRIATE FACILITY

Exit on First Level



GENERAL INFORMATION

- **CME CREDIT FOR PHYSICIANS (MDs and DOs):** In accordance with our accreditation guidelines, we have instituted a self-reporting system for physicians to obtain *AMA PRA Category 1 Credit™*. Physicians must attest to the exact number of hours that they have been in attendance. Attestation will be required on the online post-activity evaluation.

Date	Maximum Credit
Friday, May 1, 2026 (DOM Grand Rounds RSS)*	1.00
Friday, May 1, 2026	7.50
Saturday, May 2, 2026	3.25

**In order to claim credit for this GR session, please follow the instructions provided during the presentation to text in your attendance. This is a separate accredited session.*

Please Note: Certificates for all attendees will be available upon submission of the online evaluation form that will be available to you post-activity.

- **SIGN-IN FOR ALL PARTICIPANTS:** Please be sure to sign in once to verify your attendance. If you have paid for your registration by Hopkins Tuition Remission (TR), you must, per University policy, sign in and/or pick up your name badge at the registration desk to confirm your attendance. If we cannot verify attendance by sign in sheet or badge, we must bill the cost of your registration back to your department as a no show fee (per TR policy).
- **EVALUATIONS:** Following the activity, each attendee will be able to access the post-activity evaluation via the **My CME** section after signing in at <https://hopkinscme.cloud-cme.com>. The evaluation must be completed by **June 11, 2026** in order to receive your certificate of credit. The evaluations are most helpful to us in planning future programs, and we appreciate your comments and suggestions. We ask you to evaluate each speaker.
- **OUTCOMES SURVEY:** An outcomes survey will be sent to all physician attendees within two months post activity to assist us in determining what impact this activity had on the attendee's practice.
- **ELECTRONIC DEVICES:** As a courtesy to speakers and other attendees, please turn off all cell phones and pagers while the meeting is in progress.

Johns Hopkins School of Medicine
Office of Continuing Medical Education
Turner 20, 720 Rutland Avenue
Baltimore, Maryland 21205-2195
Johns Hopkins University General Counsel
Johns Hopkins Health System General Counsel

Johns Hopkins University Office of Public Safety

Telephone: (410) 502-9636
Fax: (866) 510-7088
Website: <https://hopkinscme.cloud-cme.com>
Email CME: cmenet@jhmi.edu
(410) 502-2843
(410) 955-7949
(410) 955-6070 Urgent Only
(410) 516-7777

CONFIDENTIALITY DISCLAIMER FOR CME CONFERENCE PARTICIPANTS

I certify that I am participating in a Johns Hopkins University School of Medicine CME activity for accredited training and/or educational purposes.

I understand that while I am participating in this capacity, I may be exposed to "protected health information," as that term is defined and used in Hopkins policies and in the federal HIPAA privacy regulations (the "Privacy Regulations"). Protected health information is information about a person's health or treatment that identifies the person.

I pledge and agree to use and disclose any of this protected health information only for the training and/or educational purposes of my visit and to keep the information confidential. I agree not to post or discuss this protected health information, including pictures and/or videos, on any social media site (e.g. Facebook, Twitter, etc.), in any electronic messaging program or through any portable electronic device.

I understand that I may direct to the Johns Hopkins Privacy Office any questions I have about my obligations under this Confidentiality Pledge or under any of the Hopkins policies and procedures and applicable laws and regulations related to confidentiality. The contact information is: Johns Hopkins Privacy Office, telephone: 410-614-9900, e-mail: HIPAA@jhmi.edu.

"The Office of Continuing Medical Education at the Johns Hopkins University School of Medicine, as provider of this activity, has relayed information with the CME participants and certifies that the visitor is attending for training, education and/or observation purposes only."

For CME Questions, please contact the CME Office
(410) 955-2959 or e-mail cmenet@jhmi.edu.
For CME Certificates, please call (410) 502-9636.

Johns Hopkins University
School of Medicine Office of Continuing Medical
Education Turner 20/720 Rutland Avenue
Baltimore, Maryland 21205-2195

Reviewed & Approved by:
General Counsel, Johns Hopkins Medicine (4/1/03)
(Updated 4/09, 3/14, 9/16 and 9/22/20)

ACKNOWLEDGEMENT

We wish to acknowledge the following companies that have pledged a gift-in-kind in support of this activity. Please note that the commercial support received is solely for the educational component of the activity and will not be used to provide food and beverage.

**Fujifilm Sonosite, Inc.
Mindray**

The Physician Payments Sunshine Act was enacted by Congress to increase public awareness of financial relationships between drug and medical device manufacturers and physicians. In compliance with the requirements of this Act, the commercial supporter/s of this activity may require the Johns Hopkins School of Medicine to report certain professional information (such as name, address, National Provider Identifier (NPI), and State License number) of physician attendees who receive complimentary food and beverage in conjunction with a CME activity. The commercial supporter is required to submit the collected data to the Centers for Medicare and Medicaid Services which will then publish the data on its website.

FULL DISCLOSURE POLICY AFFECTING CME ACTIVITIES

As a provider approved by the Accreditation Council for Continuing Medical Education (ACCME), Johns Hopkins University School of Medicine Office of Continuing Medical Education (OCME) requires attested and signed global disclosure of the existence of all financial interests or relationships with ineligible companies from any individual in a position to control the content of a CME activity sponsored by OCME.

The following relationships have been reported for this activity:

NAME	ROLE	RELATIONSHIP(S)
<u>Paul Auwaerter, MD</u>	Presenter	Stocks: Capricor and Johnson and Johnson Grant: Pfizer, Inc. Consulting Fee: Tarsus and Shionogi Membership: Capricor
<u>Brian Garibaldi, MD</u>	Presenter	Ownership: AriScience Consulting Fee: ATW Health Solutions, Clario, and National Board of Medical Examiners Membership: Society of Bedside Medicine
<u>Lynne Farrow, MSMS</u>	Presenter	Honoraria: ZOLL Medical

No one else in a position to control the content of this educational activity has disclosed a relevant financial interest or relationship with ineligible companies. All relevant conflicts of interest have been mitigated prior to the commencement of the activity.

Note: Grants to investigators at the Johns Hopkins University are negotiated and administered by the institution which receives the grants, typically through the Office of Research Administration. Individual investigators who participate in the sponsored project(s) are not directly compensated by the sponsor, but may receive salary or other support from the institution to support their effort on the project(s).

ACTIVITY DIRECTORS

John Woller, MD

Assistant Professor of Medicine
Associate Program Director of
Clinical Reasoning and Bedside Medicine
Osler Medical Residency

Kristina Montemayor, MD, MHS

Assistant Professor of Medicine
Senior Associate Program Director
Osler Medical Residency

GUEST FACULTY

Bryan Broderick, MD

Assistant Professor of Medicine
Robert Wood Johnson Medical School
Rutgers University

André Mansoor, MD

Professor of Medicine
Oregon Health and Science University

Brian Garibaldi, MD

Professor
Northwestern University School of Medicine

Allison Tsao, MD

Assistant Professor of Clinical Medicine
University of Pennsylvania School of Medicine

Marcela Ferrada, MD

Clinical Associate Professor
Department of Medicine
University of Maryland School of Medicine

JOHNS HOPKINS FACULTY

Paul Auwaerter, MD

Professor of Medicine
Clinical Director, Division of Infectious Diseases
Johns Hopkins School of Medicine

Gail Berkenblit, MD, PhD

Associate Professor of Medicine
Program Director, Osler Residency Program
Johns Hopkins School of Medicine

Natasha Chida, MD, MSPH

Associate Professor of Medicine and
Infectious Diseases
Associate Fellowship Program Director Education
Johns Hopkins School of Medicine

Justin Choi, MD

Fellow
Johns Hopkins School of Medicine

Julie Coursen, MD

Fellow
Johns Hopkins School of Medicine

Sanjay Desai, MD

Professor of Medicine
Division of Pulmonary and Critical Care Medicine
Vice Dean for Education
Johns Hopkins School of Medicine

Lynne Farrow, MSMS

Senior Simulation Education
Johns Hopkins School of Medicine

David Hellmann, MD

Aliki Perroti Professor of Medicine
Professor of Rheumatology
Director, Johns Hopkins
Center for Innovative Medicine

Edward Kasper, MD

Professor of Medicine and Cardiology
Johns Hopkins School of Medicine

Gigi Liu, MD

Assistant Professor of Medicine
Johns Hopkins School of Medicine

Justin McArthur, MBBS, MPH

Professor of Medicine, Neurology,
Pathology and Epidemiology
Director, Neuro Neuroimmunology
Acting Chair, Neurology
Johns Hopkins School of Medicine

Meehir Shah, MD

Fellow
Johns Hopkins School of Medicine

Catherine Simpson, MD

Associate Professor of Medicine
Division of Pulmonary and Critical Care Medicine
Johns Hopkins School of Medicine

Marida Twilley

Nursing Practice and Professional
Development Specialist

Phil Wagner, MD

Assistant Professor
Hospital Medicine
Johns Hopkins School of Medicine

Amelita Woodruff, MD

Assistant Professor
Hospital Medicine
Johns Hopkins School of Medicine

PROGRAM

Morning

Friday, May 1, 2026

8:00 - 9:00 DOM Grand Rounds – Hurd Hall
André Mansoor, MD

9:00 - 9:30 Continental Breakfast

9:30 - 9:50 Welcome and Conference Goals – Alumni Auditorium, 1st Floor
Kristina Montemayor, MD
John Woller, MD

9:50 - 10:00 Bedside Medicine in Residency Training
Natasha Chida, MD, MSPH

10:00 - 12:15 Small Groups: Group A

Patient 1 – Cardiology
Edward Kasper, MD
Room N331

Patient 2 – Pulmonary
Brian Garibaldi, MD
Room N424

Patient 3 – Neurology
Justing McArthur, MD
Room N130

Small Groups: Group B

10 – 10:45 – Partnering with Patients
David Hellmann, MD
Room N340

10:45 – 11:30 – Physiology at the Bedside
Allison Tsao, MD
Room N340

**11:30 – 12:15 – Precision Medical
Education**
Sanjay Desai, MD
Room N340

12:15 - 1:00 LUNCH (Hub & Carpenter A)

PROGRAM

Afternoon

Friday, May 1, 2026

1:00	-	1:45	<u>Group A Activities Finish-Up</u> Patient 4 – Systemic Findings Gail Berkenblit, GIM <i>Room N140</i>	<u>Small Groups: Group B</u> Talk 4 – JVP Exam Andre Mansoor, MD <i>Room N340</i>
1:45	-	4:45	<u>Small Groups: Group A - Patients</u> Talk 1 – Listening to Patients Marcela Ferrara, MD <i>Room N340</i>	<u>Small Groups: Group B - Talks</u> Patient 1 – Cardiology Edward Kasper, MD <i>Room N331</i>
1:45	-	2:30	Talk 2 – Clinical Reasoning at the Bedside John Woller, MD <i>Room N340</i>	Patient 2 – Pulmonary Catherine Simpson, MD <i>Room N424</i>
2:30	-	3:15	Talk 3 – Physiology at the Bedside Kristina Montemayor, MD <i>Room N340</i>	Patient 3 – Neurology Justin McArthur, MD <i>Room N130</i>
3:15	-	4:00	Talk 4 – JVP Exam André Mansoor, MD <i>Room N340</i>	Patient 4 – Systemic Findings Gail Berkenblit, MD, PhD <i>Room N140</i>
4:00	-	4:45		
4:45	-	5:00	Wrap-Up – Alumni Auditorium, 1st Floor Kristina Montemayor, MD John Woller, MD	

PROGRAM

Saturday, May 2, 2026

8:00 - 8:15 Registration and Breakfast - *Alumni Auditorium, 1st Floor*

8:15 - 11:00 Activity A - Physical Diagnosis in Asylum Seekers

Phil Wagner, MD
Amelita Woodruff, MD
Room N424

Activity B - Small Groups: Code/RRT Sim

Lynne Farrow, MSMS
Marida Twilley
Room Carpenter A

Activity C - Physical Diagnosis in Asylum Seekers

Phil Wagner, MD
Amelita Woodruff, MD
Room N424

11:00 - 12:00 Keynote and Patient Presentation – *Alumni Auditorium, 1st Floor*

Cases in Bedside Medicine
Paul Auwaerter, MD

12:00

Adjourn

You will receive an email notification to complete the evaluation form and to attest to the number of hours in attendance.

The registration desk will remain open during conference hours.

The Johns Hopkins School of Medicine takes responsibility for the content, quality and scientific integrity of this CME activity.

The schedule is subject to change.

